

## Human Ocular Histological Sections

Updated May 2023

NDRI #	Disease State <i>from Donor History &amp; Pathology Report</i>	Path Report?	Age/Race/Sex	FFPE Regions Available								OCT Regions Available							
				2	3	4	5	6	7	8	2	3	4	5	6	7	8		
0067722	Glaucoma (angle-closure)	Yes	90/C/F			✓				✓							✓	✓	✓
0067723	Diabetes - Type II, Diabetic Retinopathy (early or nonproliferative)	Yes	66/C/F				✓	✓			✓								✓
0067724	Normal	Yes	74/C/F								✓								
0067763	Glaucoma (open angle), Macular Degeneration (dry), Peripheral Chorioretinal Atrophy	Yes	89/C/F								✓						✓	✓	✓
0067813	Glaucoma	Yes	79/C/F																✓
0067814	Macular Degeneration, Glaucoma	Yes	88/C/F											✓			✓	✓	✓
0067832	Glaucoma	Yes	80/C/M						✓		✓	✓	✓				✓	✓	✓
0067833	Glaucoma, Macular Degeneration (dry), Peripheral Chorioretinal Atrophy	Yes	98/C/F				✓				✓	✓							✓
0067868	Diabetic - Type II (20 years), Diabetic Retinopathy (nonproliferative)	Yes	60/C/F							✓		✓	✓				✓	✓	✓
0067921	Macular Degeneration (dry), Diabetes - Type II, pre-maculopathy in mild nonproliferative diabetic retinopathy	Yes	86/C/F	✓	✓	✓	✓	✓			✓	✓	✓				✓	✓	✓
0067932	Glaucoma (open angle), Macular Degeneration (dry), Peripheral Chorioretinal Atrophy	Yes	90/C/F			✓				✓									✓
0067936	Diabetes - Type II, Macular Degeneration (dry)	Yes	93/C/M			✓	✓												
0067940	Normal	Yes	30/C/M			✓					✓	✓	✓				✓	✓	✓
0067996	Normal	Yes	71/C/F								✓	✓					✓	✓	
0068033	Macular Degeneration (dry)	Yes	80/C/F			✓		✓									✓		
0068039	Glaucoma (open angle), Peripheral Chorioretinal Atrophy	Yes	85/C/M				✓				✓								✓
0068073	Diabetes - Type II (32 years), Diabetic Retinopathy (proliferative)	Yes	62/C/F			✓						✓					✓		✓
0068213	Normal, Peripheral Chorioretinal Atrophy	Yes	70/C/F	✓	✓			✓				✓					✓	✓	✓
0068221	Macular Degeneration (dry)	Yes	89/C/M				✓	✓			✓	✓					✓	✓	✓
0068243	Glaucoma, Peripheral Chorioretinal Atrophy	Yes	85/C/M	✓			✓	✓	✓										
0068294	Macular Degeneration (wet)	Yes	93/C/M	✓	✓	✓	✓	✓	✓		✓	✓	✓				✓	✓	✓
0068373	Diabetes - Type II (9 years), Diabetic Retinopathy (nonproliferative)	Yes	68/C/F	✓	✓				✓			✓					✓	✓	✓
0068386	Glaucoma (open angle), Macular Degeneration (dry), Peripheral Chorioretinal Atrophy	Yes	93/C/M	✓			✓				✓	✓					✓	✓	✓
0068413	Normal, Peripheral Chorioretinal Atrophy	Yes	74/C/F	✓	✓	✓	✓	✓	✓		✓	✓					✓	✓	✓
0068555	Macular Degeneration (dry)	Yes	86/C/F	✓	✓	✓	✓	✓	✓		✓	✓					✓		
0068797	Diabetes - Type II, Diabetic Retinopathy (nonproliferative), Macular Degeneration (dry), Glaucoma (angle narrowing)	Yes	82/C/F				✓	✓			✓	✓					✓	✓	✓
0068874	Diabetic - Type II (5 years)	Yes	84/C/M	✓	✓	✓	✓	✓			✓	✓					✓	✓	✓
0069098	Diabetes, Diabetic Retinopathy, Glaucoma	Yes	90/O/F	✓	✓	✓	✓	✓	✓		✓	✓					✓	✓	✓
ND00090	Diabetes - Type II, Glaucoma (open angle), Diabetic Retinopathy (nonproliferative), Macular Edema	Yes	77/C/M	✓	✓	✓	✓	✓	✓		✓	✓					✓	✓	✓
ND00193	Glaucoma, Retinal Dystrophy (pigmentary), Macular Degeneration	Yes	76/C/M			✓	✓	✓				✓					✓	✓	✓
ND00329	Diabetes - Type II (30 years), Diabetic Retinopathy (nonproliferative), Macular Degeneration (dry), Macular Edema	Yes	96/C/F			✓	✓	✓				✓	✓				✓	✓	✓
ND00496	Diabetes - Type II, Diabetic Retinopathy (nonproliferative), Macular Degeneration (dry), Macular Edema (cystoid)	Yes	75/U/F			✓	✓		✓		✓						✓	✓	✓
ND00536	Diabetes, Glaucoma (open angle), Diabetic Retinopathy (nonproliferative)	Yes	72/C/F	✓	✓	✓	✓	✓	✓		✓	✓					✓	✓	✓
ND00665	Diabetes - Type II, Pre-Maculopathy, Diabetic Retinopathy (mild nonproliferative)	Yes	72/C/M			✓	✓				✓	✓							✓
ND00791	Normal	Yes	57/C/M				✓	✓											✓
ND01358	Normal	No	76/C/M				✓	✓				✓					✓	✓	✓
ND01405	Normal with Cystic Fibrosis (7 years)	No	45/C/F			✓	✓	✓	✓										
ND01824	Diabetes (19 years), Retinitis Pigmentosa	No	41/H/M								✓								
ND02566	Prediabetes	Yes	74/C/M		✓	✓	✓	✓	✓										
ND02580	Diabetes, Macular Degeneration (dry), Pre-Maculopathy, Geographic Atrophy	Yes	89/C/F			✓	✓	✓	✓										
ND02584	Diabetes - Type II	No	77/C/F			✓	✓	✓	✓										
ND02591	Macular Degeneration	No	82/C/F			✓	✓	✓											
ND02613	Diabetes - Type II (16 years), Diabetic Retinopathy (proliferative)	Yes	60/C/M	✓	✓	✓	✓	✓											
ND02624	Diabetic - Type II (5 years)	No	70/C/M			✓	✓	✓	✓										
ND02627	Diabetic - Type II (8 years)	No	75/C/M			✓	✓	✓	✓										
ND02722	Diabetes - Type II (20 years), Diabetic Retinopathy (nonproliferative)	Yes	93/C/M	✓	✓	✓	✓	✓	✓										
ND02727	Normal	No	78/C/F			✓	✓	✓											
ND02741	Macular Degeneration	No	88/C/F			✓	✓	✓											
ND03080	Diabetes, Macular Degeneration	No	77/C/M			✓	✓		✓										
ND03135	Diabetes - Type II (2 years), Macular Degeneration	No	78/C/M			✓	✓	✓											
ND03186	Normal	No	71/C/M	✓	✓	✓	✓	✓	✓										
ND03566	Normal	No	67/C/F			✓	✓												
ND03577	Normal	No	60/C/M			✓	✓												
ND05278	Normal	No	36/C/M			✓	✓	✓											

Inventory Key	
✓	Limited Quantity available (pre-cut slides only)
✓	Thawed and Refrozen Samples available (pre-cut and uncut slides)
✓	Samples available (pre-cut and uncut slides)
	No samples available

NDRI offers three slide options: Electrostatically charged, Gelatin Subbed, and RNAase Free. Your order will be cut on Electrostatically charged slides unless otherwise indicated. Stains and imaging are available upon request.

In the normal retina the macula is histologically defined as the region with two or more layers of ganglion cells. As the retina may not be normal, we consider the macula to be retina within a 5.5mm diameter circle centered on the foveola.

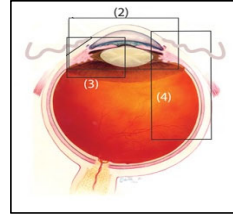
**Definitions:**

**Fovea:** (fovea centralis) is 1.85mm in diameter. The foveola, which is 0.35mm in diameter, lies within the fovea.

**Parafovea:** ring 0.5mm in width surrounding fovea. Has the largest accumulation of nerve cells in the entire region, especially ganglion cell and inner nuclear layers. The thick outer plexiform layer in this region is the layer of Henle. Normally the ganglion cells form 7 rows at its edge.

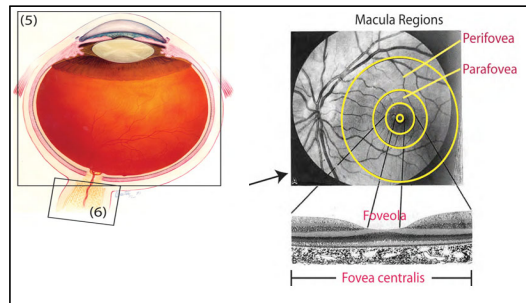
**Perifovea:** ring 1.5mm around parafovea. Normally commences where the ganglion cells are 4 layers and terminates where the ganglion cells are reduced to a single layer.

Anterior Ocular Structures	
Region #	Structures
2	Anterior Segment
3	Angle structures only
4	Angle with mid-peripheral



Complete Eye Section and Optic Nerve	
Region	Structures
5	Complete Eye Section through Foveola
5	Complete Eye Section through Fovea
5	Complete Eye Section through Para-, Perifovea
5	Complete Eye Section through Non-Macula
6	Optic Nerve*

\* The superior and lateral surfaces of the optic nerve are inked red and black respectively. The nerve is cut flush from the globe and embedded in cross and longitudinal orientations in the same block.



Retina and Macula	
Region	Structures
7	Retina with RPE/Choroid structure
7	Neural Retina only
8	Macula - Foveola
8	Macula - Fovea
8	Macula - Parafovea/Perifovea

